



\$85 Facial Rejuvenation (a \$150 Value)
Exp 9/30/07

Anti-aging Non-Surgical Face Lift with color light and Microcurrent technology

Developed according to the principles of Chinese medicine, Energy Light facial Rejuvenation works in harmony with the natural energy systems of the body. Its exclusive combination of Microcurrent and Color light re-educates facial muscles and addresses the underlying causes of visible aging. This unique, non-invasive, holistic system takes rejuvenation to the next level by providing whole body renewal with results that go to a new level...

Regular Effects of Facial Rejuvenation:

- wrinkle reduction
- adjustment of facial muscle tone to more youthful firmness to reduce or eliminate sagging areas
- normalization of skin coloration to more healthy hues
- reduction or elimination of acne, blemishes and age spots
- increase in collagen and elastin production to fill out and contour the face
- facilitating a healthy, vibrant glow to the face

Additional Healing Effects from Facial Rejuvenation:

- relief of menstrual cramps
- menopausal discomfort alleviated
- weight loss (averaging 5-15 pounds over a series of 3-10 facial sessions)
- relief of back and neck pain
- depression or emotional malaise lifted, increase in mental clarity, increased

In this issue:

**MASSAGE AND ACUPUNCTURE
EFFECTIVE IN REDUCING PAIN
AFTER CANCER SURGERY**

TATTOOS FOUND ON MUMMY

**Introducing New Services: RECONNECTIVE
HEALING & THE RECONNECTION**

**Success Story: Asthma, Allergy, and Low Blood Cell
Count**

NOVEMBER SPECIAL OFFER - \$75

Complete Health Analysis (\$150 value):

- **Body Fat Analysis**
- **Energetic Nutritional Test**
- **Report of Findings with Recommendations**

Energetic Nutritional Testing is a unique testing method which incorporates various muscle testing techniques, Acupoints Testing, and Emotional Release Therapy. This unique muscle testing technique can zero in on the causes of disease and the right nutritional program to correct them.

Dr. Lee has used Energetic Nutritional Testing to successfully diagnose her patients to overcome fatigue, weight problems, irritable bowels, acid reflux, high cholesterol and blood pressure, PMS, menopause symptoms and many more. She is able to effectively "crack" even the most difficult cases such as chronic allergies, inability to lose weight, reoccurring aches and pains.

Please bring a copy of this newsletter with you upon receiving care.

We can help you find out what is stressing your body: food allergy, immune challenges (bacterial, virus, parasite or Yeast), heavy metals or chemical allergy.

feelings of inner calm and emotional centeredness

- relief of digestive discomfort and constipation
- writer's block to composing music removed, so that a musician patient moved out of a period of disconnection from her music
- fatigue lifted, energy levels increased
- insomnia relieved
- hormonally-based acne permanently cleared up

How can these effects be explained?

Meridian pathways connect the face with the viscera. The Stomach, Small Intestine, Large Intestine, Triple Warmer, Gall Bladder, and Urinary Bladder channels have points directly on the face. Further, the Ren (conception) and Du (governing) channels terminate on the face, and each of these extraordinary vessels link with all Yin and Yang functions of the body, respectively. In modern terminology, the Du channel connects all of the organs and glands to the brain and central nervous system via afferent and efferent receptors of the autonomic ganglia. Therefore, all organs are linked to the face directly or indirectly through the meridian system.

ION-CLEANSE CLEANSING/DETOXIFICATION PROGRAM:

It literally drains toxins from your lymph nodes out of your feet in twenty to thirty minutes. It is especially effective if done right after acupuncture treatment, since the channels are all open and ready to let the toxins out.

| Material or Area of the Body | Color/Particle |
|---|-----------------------------|
| Detoxifying from the kidney, bladder, urinary tract, female/prostate area | Yellow-Green |
| Detoxifying from joints | Orange |
| Detoxifying from liver, tobacco, cellular debris | Brown |
| Detoxifying from liver | Black |
| Detoxifying from gallbladder | Dark Green |
| Lymphatic system | White Foam |
| Most likely yeast | White cheese-like particles |

It is based on the theory that if the Qi or energy is blocked, not enough energy and blood can go to nourish the local tissue cells, then local muscle response will also be weak.

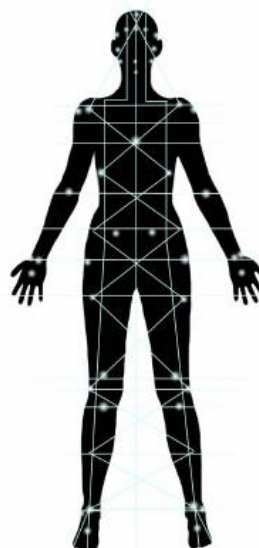
The reflex areas to check include Brain(Frontal, CSF, Crown, Cerebellum, Pituitary, Pineal, Hypothalamus, Eyes, Sinuses, Teeth, Glands, Thyroid, Para-thyroid, Lungs, Thymus, Heart, breast, Liver, gallbladder, Stomach, Pancreas, Spleen, Small Intestine, Colon, Ovaries, Testicles, Uterus, Prostate, Kidney, Bladder, Adrenals, etc..

Nutritional Dietary Counseling

Depending on your individual situation, we might also require that a patient make some specific changes in their diet and eating habits, and in their routines, in order to bring about the best possible results. Many people we see in our practice have eaten themselves into their current state of ill-health, to one degree or another. The deficiencies or imbalances lead to a breakdown in resistance or immunity and a loss of the ability to cope with environmental stresses (chemical, bacterial, or otherwise).

The good news is that it is possible to reverse the process. And my patients are very appreciative of the fact that we have a very effective system of monitoring their progress at each visit. By contrast, in medicine, the medical doctor makes a diagnosis and then uses drugs or surgery to attack or suppress the symptom or to surgically remove the “offending” organ or part. Through our analysis we determine the exact nutrients needed to supplement the patient’s diet in order to bring about improved health.

THE RECONNECTION



The Reconnection™ is the umbrella process of reconnecting to the universe that allows for Reconnective Healing™ to take place. These healings and evolutionary frequencies are of a new bandwidth and are brought in via a spectrum of *light and information* that has never before been present on Earth. It is through The Reconnection™ that we are able to interact with these new levels of light and information, and it is through these new levels of light and information that we are able to reconnect.

The intent of The Reconnection is to bring us into the fullness of our inherent connection with the universe.

This is done via a two-session experience, commonly referred to

| | |
|---------------------|--------------|
| Heavy metals | Black flecks |
| Blood clot material | Red flecks |

*The color of water will change depends on kinds of toxins that you have. \$75 per session.

How does it work?

A water molecule is composed of two hydrogen atoms and one oxygen atom. When the molecule loses a hydrogen atom, the remaining OH molecule takes on a negative charge. As you walk along the beach, your body absorbs millions of these negatively charged ions, which alkalize the blood and tissue. Because of poor diet and high stress, we tend to accumulate and store excessive quantities of waste products such as diacetic, lactic, pyruvic, uric, carbonic, acetic, butyric and heptic acids. According to Dr. Theodore Baroody, author of *Alkalize Or Die*, acid wastes attack joints, tissues, muscles, organs and glands causing minor to major dysfunction. He asserts that avoiding disease and maintaining vitality as we age requires the maintenance of an alkaline environment throughout the body. This is virtually impossible to accomplish in our high-tech, high-stress, toxic society unless we can walk on the beach everyday.

The Ion-Cleanse creates precisely the same environment as a walk along the beach, only more powerfully because your feet are in direct contact with the ions being manufactured in the water. Place your feet in the water, turn on the unit and within seconds, millions of ions enter your body and begin to neutralize these tissue acid wastes. Fat and mucous residues found in the water after bathing reflect the wastes that have left the body during the 20 to 30 minute session. Healthy individuals can expect to feel lighter and experience a greater sense of well being from each Ion-Cleanse session. Many people with pain, edema, gout and swollen or deteriorating joints report considerable symptomatic relief from Ion-Cleanse sessions.

RECONNECTIVE HEALING

Reconnective Healing is a form of healing that is here on the planet for the very first time. It reconnects us to the fullness of the universe as it reconnects us to the fullness of our beings and of who we are. It is considered to be able to reconnect us to the universe and to our very essence not just through a new set of healing frequencies, but through possibly an entirely new bandwidth. The

as receiving your Personal Reconnection. And, of course, to achieve the degree of reconnection brought fourth via The Reconnection, you will, to some extent, experience healing as part of the process.

Our galactic body of creation controls its renewing functions through meridian axiatonal lines which are the equivalent of acupuncture lines that can connect with resonating star systems.

The axial lines are part of a fifth-dimensional circulatory system combining color and sound, which are used to draw from the overself body the basic energy used for the renewing functions of the human evolutionary body. Hence, the axiatonal lines can be used for the complete regeneration of an organ and even to resurrect the dead, when activated by the proper energies.

These grids are organized to exchange genetic information throughout the body through a network of messenger cells which are passed on to any part of the body. In other words, through axiatonal grids there is provided the key framework that is necessary for the proper formation of a new limb, organ, etc. This grid network within the body is connected with the spinal column which is the major antenna for the grounding of Light signals.

Just as the cell can be split, the whole spinal column network can be split by axiatonal lines into any number of parallel body networks because the spinal column couples all of the seven major fields of the body (the chakras) in relation to the primitive brain stem and the cerebral cortex.

Axiatonal Lines are vibratory lines which connect levels of human electrochemical activity with astrobiological circuits that span the solar system and are connected with resonating star systems. The axiatonal lines connect the acupuncture mapping of the human biological system with superior astrological analogs.

– Excerpts taken from The Book of Knowledge: The Keys of Enoch by J.J. Hurtak

The Reconnection™ : \$333 will get you reconnected in two sessions

Dr. Pearl makes no claims, promises or guarantees. Dr. Pearl and anyone associated with this work, inclusive of, but not limited to The Reconnection™ and Reconnective Healing™ are neither diagnosing nor treating specific health challenges. You are solely responsible for seeing to and continuing with your own medical treatment and care.

reality of its existence has demonstrated itself clearly in practice as well as in science laboratories.

There is something that we're experiencing of which most of you are at least somewhat aware. It's that time seems to be moving faster as well as expanding. This transition is referred to by many names. "The Shift" and "Shift of the Ages" are two terms used by Gregg Braden. The transition was predicted by the Mayans, the Incas, the Hopi, Nostradamus, Edgar Cayce, and the Kabbalah (both Jewish and Christian). In *Walking Between the Worlds*, Braden defines this shift as *"both a time in Earth history as well as an experience of human consciousness. Defined by the convergence of decreasing planetary magnetics and increasing planetary frequency upon a point in time, the Shift of the Ages, or simply, The Shift, represents a rare opportunity of collectively repatterning the expression of human consciousness. The Shift is the term applied to the process of Earth accelerating through a course of evolutionary change, with the human species linked, by choice, to the electromagnetic fields of Earth, following suit through a process of cellular change."*

Healing is a return to balance. Every health challenge is a combination of the physical, mental, spiritual, emotional (and probably a few other classifications we don't have words for). We simply classify it according to its predominate characteristic. Reconnective Healing doesn't specifically "treat" anything. If in its presence you allow yourself to come back into balance, as many people do, then you do. You just do.

Everyone's experience with Reconnective Healing is unique. Often healings are reported in an instant in just one session, and sometimes it takes a bit longer for a healing to unfold. If you're lucky, your healing will come in the form you anticipated; if you're really lucky, your healing will come in a form you haven't even thought of, one that the universe has in mind specifically for you.

Healings can come in all forms. The best way to allow for a healing is to proceed in a state of expectancy, without expectation or attachment. Place yourself on the table, relax, close your eyes and simply notice. Observe. Become both the observer and the observed.

Be in a relaxed atmosphere, lie down on your back on a massage table, close your eyes and notice. Just notice. Withdraw your participatory thought process

The Healing Lab

www.HealingLab.com

Jenny C. Lee, L. Ac.
*Master Acupuncturist,
Certified Nutrition Response Clinician,
Herbalist*

MAIN OFFICE

PALO ALTO (650) 380-1999
460 California Avenue Ste 102

APPOINTMENTS ONLY

Fremont (510) 792-2179

and simply observe when there's something to notice, as well as when there's nothing to notice; lie there and let go, as if you simply had a little unexpected rest time.

Reconnective Healing® : \$120 / session

MASSAGE AND ACUPUNCTURE EFFECTIVE IN REDUCING PAIN AFTER CANCER SURGERY

Massage and Acupuncture effectively decrease pain and depression following surgery in cancer patients, according to a recent study at the University of California, San Francisco.

The randomized controlled clinical trial, reported in the *Journal of Pain and Symptom Management*, compared the post-operative symptoms of pain, nausea and depression and the cost of symptom-related medications in two groups of hospitalized patients during the first three days after cancer-related surgery.

One group received a massage and Acupuncture in addition to the usual post-operative medications, while a second group had just medication. There was a significant decrease in both pain and depressive mood among patients receiving massage and Acupuncture therapy.

During the three-day post-operative period, patients used an 11-point (0-10) numeric rating scale to rank the severity of current pain and of pain during the previous 24 hours.

Acupuncture/massage patients scored a 1.1 point improvement in pain level on the first post-operative day, while the medication group only scored a 0.1 improvement. Over the three days of the study, the Acupuncture/massage patients reported a pain improvement of 1.8, compared to only 0.3 in the control group.

"This is a significant finding," said Dr. Wolf Mehling, lead author and UCSF assistant professor of family and community medicine. "We know that integration these therapies has shown short-term benefit on psychological well-being, but there has not been strong evidence to support it until now."

As for the cost comparison, the study showed a reduction in anti-anxiety and sleep medication costs. "This preliminary data suggests looking at this further, with a larger control group and an ability to better assess individual medication usage," Dr. Mehling said.

STUDY OF 5,400 YEAR OLD "ICE MAN" MUMMY FINDS ACUPUNCTURE TATTOOS MATCHING HIS AILMENTS

A 5,400-year-old mummified man found in 1991 in a melting glacier in the mountains of Northern Italy bears a complicated system of bluish-black tattoos running along his back, right knee and left ankle, in the form of simple stripes or crosses that closely match Acupuncture locations. Although the discovery of the oldest preserved human being ever found has had tremendous

archaeological value, the tattoos so intrigued scientific investigators that experts from three Acupuncture societies were asked to examine the locations of the tattoos.

Nine tattoos were identified as being located directly on, or within six millimeters of, traditional Acupuncture points. Two more were located on an Acupuncture Meridian. One tattoo was used as a local point. The remaining three tattoos were situated between 6-13mm from the closest Acupuncture point, but later studies revealed that the mummy's skin had been twisted by pressure from the glacier, which could mean these tattoos were actually exactly on the Acupuncture points. This could mean that Acupuncture was practiced more than 2,000 years before its supposed origins in China, and in a different part of the world.

Tattoos Match Mummy's Physical Problems

Even more amazing, studies of the ice man's body reveal that the tattooed Acupuncture points are those that would treat his major ailments. Forensic studies show he suffered from arthritis in the hip joints, knees, ankles and lumbar spine, and nine of the mummy's 15 tattoos are located on the meridian commonly associated with treating back pain. In fact, one of the mummy's cross shaped tattoos is located on point UB60, which is considered by several texts a "master point for back pain."

Forensic analysis also revealed that his intestines were filled with whipworm eggs, which can cause severe abdominal pain. Five tattoos corresponded

with points that are traditionally used to treat stomach disorders. "The fact that corresponding groups of points were marked by tattoos, not randomly selected points, seems especially intriguing," the researchers noted. "From an acupuncturist's viewpoint, the combination of points selected represents a meaningful therapeutic regimen." "Taken together," the scientists added, "the tattoos could be viewed as a medical report from the stone age, or possibly as a guide to self-treatment marking where to puncture when pains occur." Named Otz, after the valley in which it was discovered, the mummy was remarkably well preserved, as were most of his clothing, tools and weapons. Scientists have examined the mummy's remains thoroughly, learning much about the everyday life of ancient Europeans.

SOURCE: *Acupuncture Today*, June, 2000;
<http://www.acupuncturetoday.com/mpacms/at/article.php?id=27608>

SUCCESS STORY:

Asthma, Allergy, and Low Blood Cell Count

Since my dad had great results with Dr. Lee, he brought me in to see her. I am ten years old and I have had low blood cell count, asthma, and allergies for most of my life. When I run at school during P.E., I would be short of breath. I was born with a low blood cell count and no neutrophils; meaning my immune system was not working.

I had surgery when I was nine months old to remove a ccam mass, which the doctors found while I was still in the womb, in my lower right lung. I also had pneumonia for three consecutive years. I went to Dr. Lee to get relief for my asthma and allergy and to increase the health of my blood and immune system.

After 2 ½ months of nutritional herbs, supplements, and diet changes I now have more energy in school, at home, and at the gym.

Kirsten J.

If you wish to be removed from our mailing list, please reply with REMOVE in subject heading.