



Monthly Healing Newsletter

August 2007

ION-CLEANSE CLEANSING/DETOXIFICATION PROGRAM:

It literally drains toxins from your lymph nodes out of your feet in twenty to thirty minutes. It is especially effective if done right after acupuncture treatment, since the channels are all open and ready to let the toxins out.

In this issue:

ACUPUNCTURE HELPS WOMAN OVERCOME EARLY MENOPAUSE

HORMONE DRUG FOUND TO CAUSE BREAST CANCER

Introducing New Services: **RECONNECTIVE HEALING & THE RECONNECTION**

Success Story: Allergies and Asthma

AUGUST SPECIAL OFFER - \$85

Complete Health Analysis (\$150 value):

- **Body Fat Analysis**
- **Energetic Nutritional Test**
- **Report of Findings with Recommendations**

Energetic Nutritional Testing is a unique testing method which incorporates various muscle testing techniques, Acupoints Testing, and Emotional Release Therapy. This unique muscle testing technique can zero in on the causes of disease and the right nutritional program to correct them.

Dr. Lee has used Energetic Nutritional Testing to successfully diagnose her patients to overcome fatigue, weight problems, irritable bowels, acid reflux, high cholesterol and blood pressure, PMS, menopause symptoms and many more. She is able to effectively "crack" even the most difficult cases such as chronic allergies, inability to lose weight, reoccurring aches and pains.

Please bring a copy of this newsletter with you upon receiving care.

We can help you find out what is stressing your body: food

Material or Area of the Body	Color/Particle
Detoxifying from the kidney, bladder, urinary tract, female/prostate area	Yellow-Green
Detoxifying from joints	Orange
Detoxifying from liver, tobacco, cellular debris	Brown
Detoxifying from liver	Black
Detoxifying from gallbladder	Dark Green
Lymphatic system	White Foam
Most likely yeast	White cheese-like particles
Heavy metals	Black flecks
Blood clot material	Red flecks

*The color of water will change depends on kinds of toxins that you have. \$75 per session.

How does it work?

A water molecule is composed of two hydrogen atoms and one oxygen atom. When the molecule loses a hydrogen atom, the remaining OH molecule takes on a negative charge. As you walk along the beach, your body absorbs millions of these negatively charged ions, which alkalize the blood and tissue. Because of poor diet and high stress, we tend to accumulate and store excessive quantities of waste products such as diacetic, lactic, pyruvic, uric, carbonic, acetic, butyric and heptic acids. According to Dr. Theodore Baroody, author of Alkalize Or Die, acid wastes attack joints, tissues, muscles, organs and glands causing minor to major dysfunction. He asserts that avoiding disease and maintaining vitality as we age requires the maintenance of an alkaline environment throughout the body. This is virtually impossible to accomplish in our high-tech, high-stress, toxic society unless we can walk

on the beach everyday.

The Ion-Cleanse creates precisely the same environment as a walk along the beach, only more powerfully because your feet are in direct contact with the ions being manufactured in the water. Place your feet in the water, turn on the unit and within seconds, millions of ions enter your body and begin to neutralize these tissue acid wastes. Fat and mucous residues found in the water after bathing reflect the wastes that have left the body during the 20 to 30 minute session. Healthy individuals can expect to feel lighter and experience a greater sense of well being from each Ion-Cleanse session. Many people with pain, edema, gout and swollen or deteriorating joints report considerable symptomatic relief from Ion-Cleanse sessions.

RECONNECTIVE HEALING

Reconnective Healing is a form of healing that is here on the planet for the very first time. It reconnects us to the fullness of the universe as it reconnects us to the fullness of our beings and of who we are. It is considered to be able to reconnect us to the universe and to our very essence not just through a new set of healing frequencies, but through possibly an entirely new bandwidth. The reality of its existence has demonstrated itself clearly in practice as well as in science laboratories.

There is something that we're experiencing of which most of you are at least somewhat aware. It's that time seems to be moving faster as well as expanding. This transition is referred to by many names. "The Shift" and "Shift of the Ages" are two terms used by Gregg Braden. The transition was predicted by the Mayans, the Incas, the Hopi, Nostradamus, Edgar Cayce, and the Kabbalah (both Jewish and Christian). In *Walking Between the Worlds*, Braden defines this shift as *"both a time in Earth history as well as an experience of human consciousness. Defined by the convergence of decreasing planetary magnetics and increasing planetary frequency upon a point in time, the Shift of the Ages, or simply, The Shift, represents a rare opportunity of collectively repatterning the expression of human consciousness. The Shift is the term applied to the process of Earth accelerating through a course of evolutionary change, with the human species linked, by choice, to the electromagnetic fields of Earth, following suit through a process of cellular change."*

Healing is a return to balance. Every health

Yeast), heavy metals or chemical allergy.

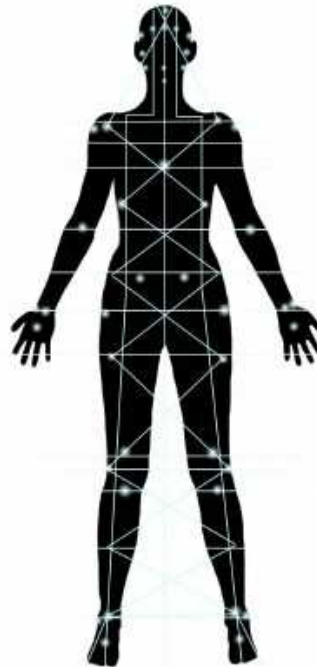
It is based on the theory that if the Qi or energy is blocked, not enough energy and blood can go to nourish the local tissue cells, then local muscle response will also be weak.

The reflex areas to check include Brain(Frontal, CSF, Crown, Cerebellum, Pituitary, Pineal, Hypothalamus, Eyes, Sinuses, Teeth, Glands, Thyroid, Para-thyroid, Lungs, Thymus, Heart, breast, Liver, gallbladder, Stomach, Pancreas, Spleen, Small Intestine, Colon, Ovaries, Testicles, Uterus, Prostate, Kidney, Bladder, Adrenals, etc..

Nutritional Dietary Counseling

Depending on your individual situation, we might also require that a patient make some specific changes in their diet and eating habits, and in their routines, in order to bring about the best possible results. Many people we see in our practice have eaten themselves into their current state of ill-health, to one degree or another. The deficiencies or imbalances lead to a breakdown in resistance or immunity and a loss of the ability to cope with environmental stresses (chemical, bacterial, or otherwise).

The good news is that it is possible to reverse the process. And my patients are very appreciative of the fact that we have a very effective system of monitoring their progress at each visit. By contrast, in medicine, the medical doctor makes a diagnosis and then uses drugs or surgery to attack or suppress the symptom or to surgically remove the "offending" organ or part. Through our analysis we determine the exact nutrients needed to supplement the patient's diet in order to bring about improved health.



THE RECONNECTION

The Reconnection™ is the umbrella process of reconnecting to the universe that allows for Reconnective Healing™ to take place. These healings and evolutionary frequencies are of a new bandwidth and are brought in via a spectrum of *light and information* that has never before been present on Earth. It is through The Reconnection™ that we are able to interact with these new levels of light and information, and it is

challenge is a combination of the physical, mental, spiritual, emotional (and probably a few other classifications we don't have words for). We simply classify it according to its predominate characteristic. Reconnective Healing doesn't specifically "treat" anything. If in its presence you allow yourself to come back into balance, as many people do, then you do. You just do.

Everyone's experience with Reconnective Healing is unique. Often healings are reported in an instant in just one session, and sometimes it takes a bit longer for a healing to unfold. If you're lucky, your healing will come in the form you anticipated; if you're really lucky, your healing will come in a form you haven't even thought of, one that the universe has in mind specifically for you.

Healings can come in all forms. The best way to allow for a healing is to proceed in a state of expectancy, without expectation or attachment. Place yourself on the table, relax, close your eyes and simply notice. Observe. Become both the observer and the observed.

Be in a relaxed atmosphere, lie down on your back on a massage table, close your eyes and notice. Just notice. Withdraw your participatory thought process and simply observe when there's something to notice, as well as when there's nothing to notice; lie there and let go, as if you simply had a little unexpected rest time.

Reconnective Healing® : \$120 / session

The Healing Lab

www.HealingLab.com

Jenny C. Lee, L. Ac.

*Master Acupuncturist,
Certified Nutrition Response Clinician,
Herbalist*

MAIN OFFICE

**PALO ALTO (650) 380-1999
460 California Avenue Ste 102**

APPOINTMENTS ONLY

Fremont (510) 792-2179

through these new levels of light and information that we are able to reconnect.

The intent of The Reconnection is to bring us into the fullness of our inherent connection with the universe. This is done via a two-session experience, commonly referred to as receiving your Personal Reconnection. And, of course, to achieve the degree of reconnection brought fourth via The Reconnection, you will, to some extent, experience healing as part of the process.

Our galactic body of creation controls its renewing functions through meridian axiatonal lines which are the equivalent of acupuncture lines that can connect with resonating star systems.

The axial lines are part of a fifth-dimensional circulatory system combining color and sound, which are used to draw from the overself body the basic energy used for the renewing functions of the human evolutionary body. Hence, the axiatonal lines can be used for the complete regeneration of an organ and even to resurrect the dead, when activated by the proper energies.

These grids are organized to exchange genetic information throughout the body through a network of messenger cells which are passed on to any part of the body. In other words, through axiatonal grids there is provided the key framework that is necessary for the proper formation of a new limb, organ, etc. This grid network within the body is connected with the spinal column which is the major antenna for the grounding of Light signals.

Just as the cell can be split, the whole spinal column network can be split by axiatonal lines into any number of parallel body networks because the spinal column couples all of the seven major fields of the body (the chakras) in relation to the primitive brain stem and the cerebral cortex.

Axiatonal Lines are vibratory lines which connect levels of human electrochemical activity with astrobiological circuits that span the solar system and are connected with resonating star systems. The axiatonal lines connect the acupuncture mapping of the human biological system with superior astrological analogs.

– Excerpts taken from The Book of Knowledge: The Keys of Enoch by J.J. Hurtak

The Reconnection™ : \$333 will get you reconnected in two sessions

Dr. Pearl makes no claims, promises or guarantees. Dr. Pearl and anyone associated with this work, inclusive of, but not limited to The Reconnection™ and Reconnective Healing™ are neither diagnosing nor treating specific health challenges. You are solely responsible for seeing to and continuing with your own medical treatment and care.

ACUPUNCTURE HELPS WOMAN OVERCOME EARLY MENOPAUSE

Many devotees of Acupuncture attest to the therapy's ability to alleviate pain of all kinds. But true believers often say it can heal physical problems as well as just bring pain relief.

Rosana Bouzas of Sydney, Australia, suffered early menopause and was told by her doctors that she would never be able to have another baby. Rosana embarked on a series of Acupuncture treatments, and three months later found she was pregnant — and perfectly healthy. “Initially, I thought I’d sought Acupuncture out to help with the symptoms of menopause, and when I explained exactly to the acupuncturist exactly what my situation was, he never promised me I’d get pregnant, but he did say that I was young, and healthy otherwise, and if we toned the body and responded to the treatment, there was a good possibility I could get pregnant,” Rosana told [ninemsn](#), one of Australia’s most popular news and information web sites.

“After three months of treatment I was pregnant, and I had a beautiful baby girl, Sophia. She was born on Christmas Day, so we always say that she’s our miracle baby. I think something as radical as getting pregnant when you’re told your ovaries are not functioning and you’re

HORMONE DRUG FOUND TO CAUSE BREAST CANCER, DRUG GIANT WYETH TO PAY VICTIM \$1.5 MILLION

Drug giant Wyeth has been ordered by a state court in Philadelphia to pay \$1 million in compensation to an Arkansas woman who developed breast cancer after taking the hormone replacement therapy drug, Prempro™. The woman’s husband was also awarded damages to the tune of \$500,000. The lawsuit brought against Wyeth by Mary Daniel, 60, of Hot Springs, Ark., found that the company failed to adequately warn doctors and patients about the cancer risks of Prempro. The Daniel lawsuit is only the third of about 4,500 cases now lined up against Wyeth and Prempro.

Judge Myrna Field ruled that evidence was insufficient to hold Wyeth liable for punitive damages, but allowed the jury to hear evidence on punitive damages and to render a verdict — under seal — in case her ruling is reversed on appeal. The jury found Wyeth’s conduct was “malicious, wanton, willful or oppressive,” allowing punitive damages to be awarded. However, because of the judge’s ruling, the punitive award will remain sealed unless an appeals court overturns the judge’s decision. Daniel developed cancer after taking Prempro — a combination of estrogen and progestin — every other day for about 16 months before being diagnosed in 2001 with breast cancer. She said that Prempro was prescribed to relieve hot flashes, a common symptom of menopause. She had a normal mammogram result in March 1999, and started on Prempro that December to combat hot flashes. In December 2000, her mammogram result was abnormal and in July 2001, she was diagnosed with breast cancer. After her diagnosis, she had two surgeries and underwent chemotherapy and radiation. She has been cancer-free since.

Wyeth “Protecting Bottom Line Instead of Patients”

According to Daniel’s legal representative, Zoe Littlepage, Wyeth had been informed that there was an association between Prempro and cancer. Even though the company had known for decades that postmenopausal drugs can

not going to get pregnant, I think there's more to it than just me believing the treatment would work." ninemsn.com has the largest online audience in Australia, with 8.02 million (as of February 2007) people visiting the site each month. This translates into 74 percent of active online Australians visiting the site.

SOURCE: ninemsn, Australia (no date);
<http://health.ninemsn.com.au/article.aspx?id=118613>

cause breast cancer, Littlepage said Wyeth deliberately failed to do studies to understand or quantify that risk, or warn doctors and patients about its risks. She accused the company of choosing to protect their bottom line rather than protecting patients. She suggested that the hundreds of millions of dollars that Wyeth makes annually on the hormone-replacement drug provided a financial disincentive to conduct vigorous research.

Wyeth's attorneys contended that Daniel's cancer began long before her Prempro use and that she had several risk factors that predisposed her to breast cancer. Of the other two Prempro cases brought to trial, the company won its first case in Arkansas in mid-2005, and lost the second in Philadelphia later in the year but it was declared a mistrial.

Sources: http://lawprofessors.typepad.com/mass_tort_litigation/
<http://www.news-medical.net/?id=21588>
Prempro is a trademark of Wyeth Pharmaceuticals, Inc.

SUCCESS STORY:

Allergies and Asthma

A friend, who benefited greatly, referred me to the Healing Lab. I had very severe allergies and asthma because of environmental conditions. I was tired a lot and had very low energy levels, especially in the afternoon. In addition to having stiff and achy joints, neck and lower back pain, I would have frequent headaches and sinus congestion.

For my neck and lower back pain, I would have regular chiropractor visits for adjustments. To treat my other symptoms, traditional western doctors would continually prescribe medicine and have me take over the counter drugs. Since I did not want to take any more western medicine and wanted a natural approach to healing, I went to see Dr. Jenny Lee.

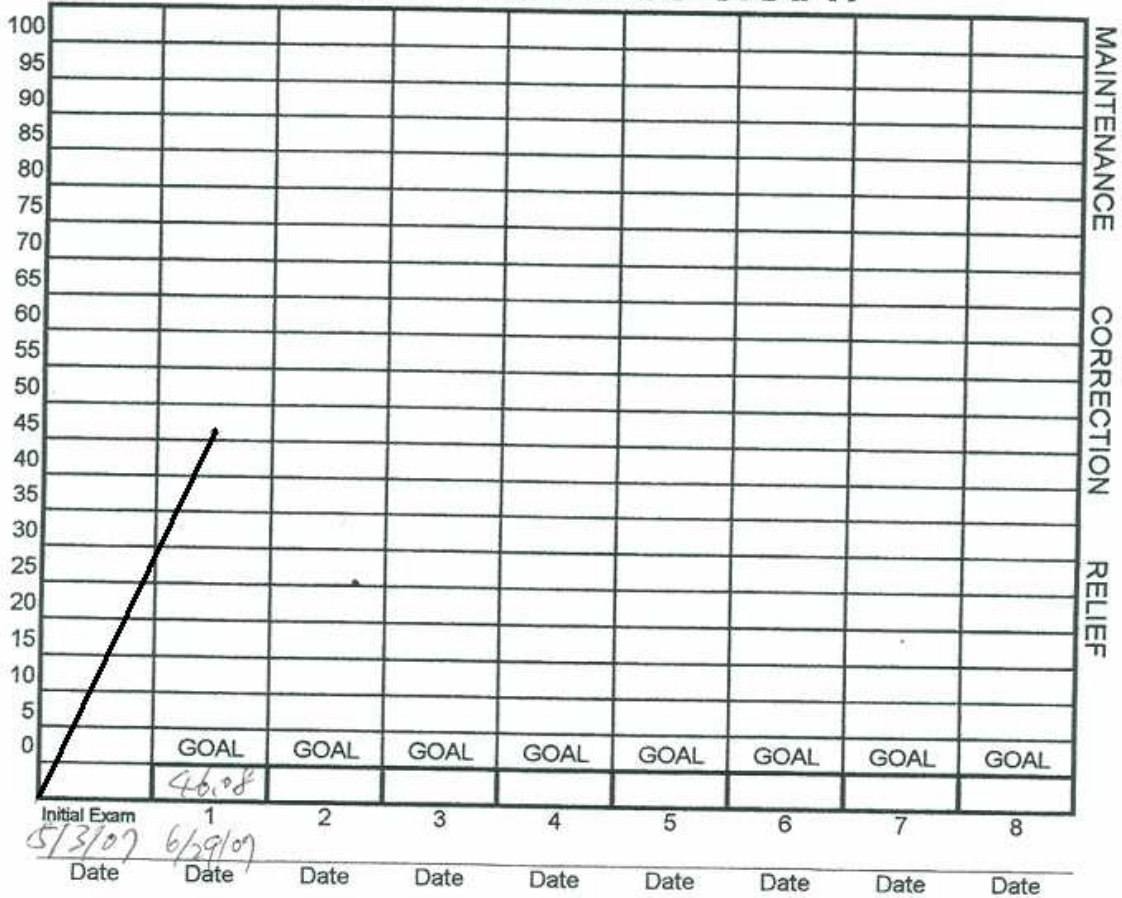
I suffered with my symptoms until I received treatments from Dr. Lee with acupuncture, ion cleanse, and nutritional response testing. Within the first two weeks, my allergies cleared up and my energy level was up and steady throughout the day. Within the first week, there was clarity of mind and sinuses. I have not needed to see a chiropractor nor a western doctor

since seeing Dr. Lee.

Henry J.

Patient's Name: Henry

PATIENT PROGRESS GRAPH



If you wish to be removed from our mailing list, please reply with REMOVE in subject heading.